

DETECTOR

PENDENT SPRINKLER (OPEN)

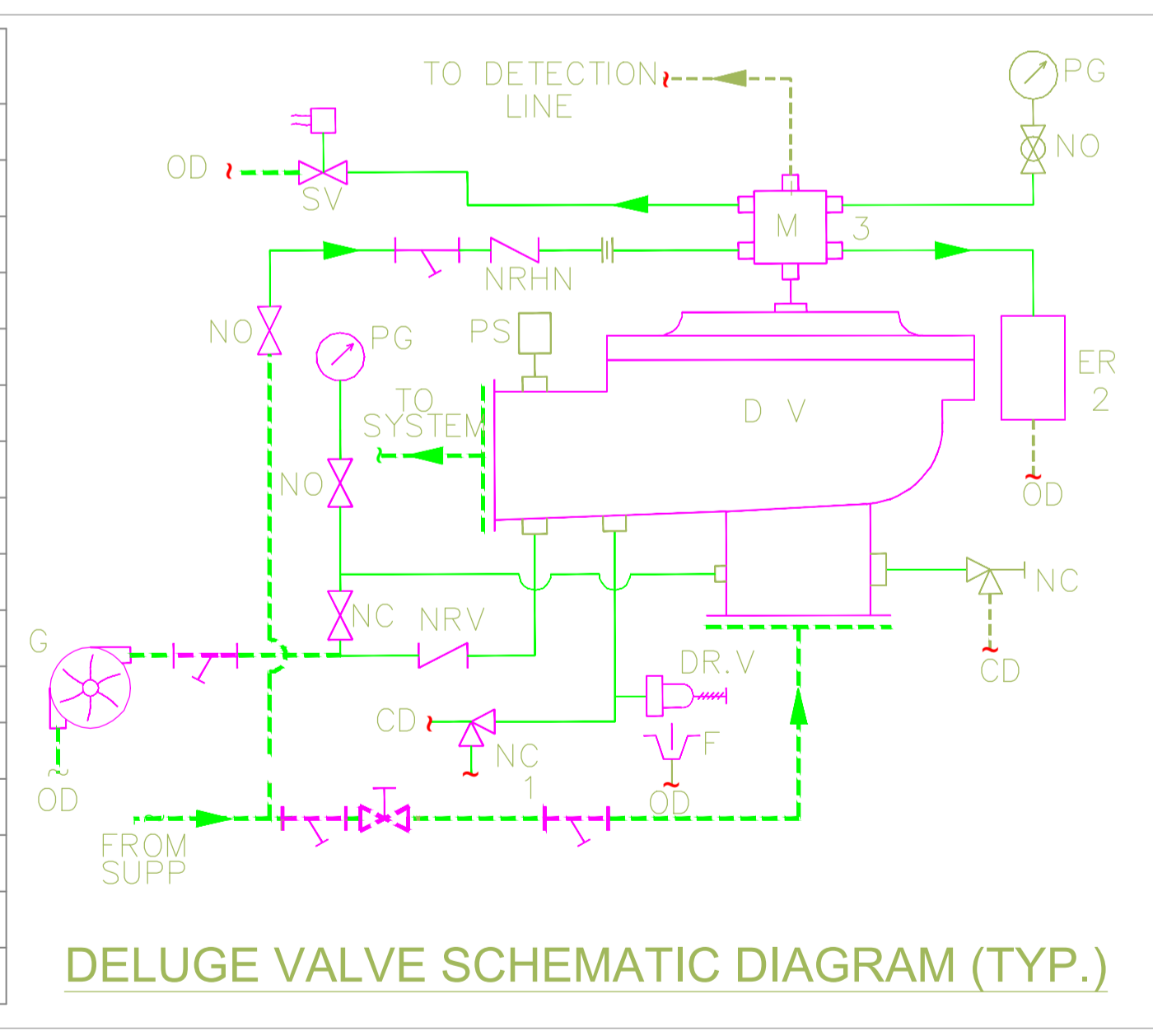
ACTIVATION OF DETECTOR SENDS SIGNAL BACK TO THE PANEL

AFTER DETECTION IS ACTIVATED, THE PANEL ENERGIIZES THE SOLENOID

VFR 400 RELEASE CONTROL PANEL

WATER SUPPLY

S No.	DESCRIPTION
1.	NRV = NON RETURN VALVE
2.	ER = EMERGENCY RELEASE BOX
3.	M = SIX WAY MANIFOLD
4.	DV = DELUGE VALVE
5.	G = SPRINKLER ALARM
6.	PG = PRESSURE GAUGE
7.	NO = NORMALLY OPEN
8.	PS = PRESSURE SWITCH
9.	CD = COMMON DRAIN
10.	NRHN = NRV WITH RESTRICTION HEX NIPPLE
11.	SV = SOLENOID VALVE
12.	NC = NORMALLY CLOSED
13.	DR.V = DRIP VALVE
14.	F = FUNNEL
15.	OD = OPEN DRAIN
16.	CV = CHECK VALVE



SLD FOR DELUGE VALVE